

CERTIFICATE OF LOCATION OF GOVERNMENT CORNER

SOUTH QUARTER Corner of Section 34, Township 105N, Range 42W

5th Principal Meridian, State of Minnesota, County of Murray.

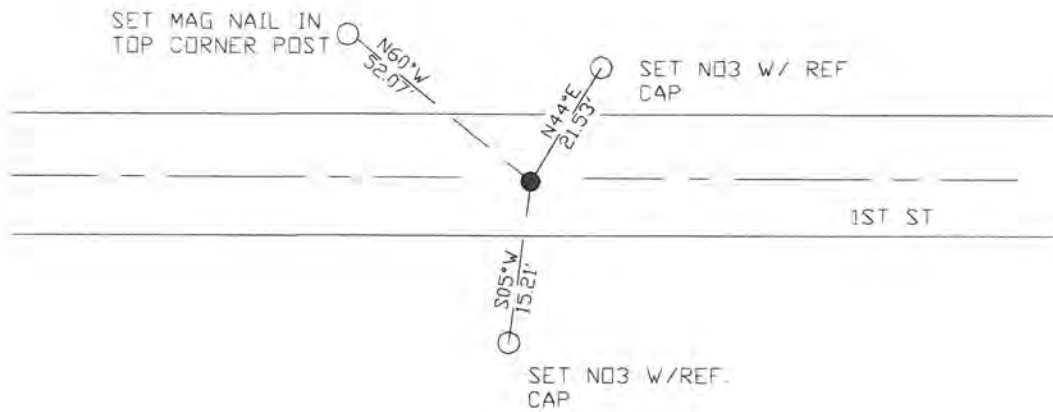
At the corner location shown on the sketch:

On _____ found a _____
DATE

left monument as found lowered monument removed monument (explain)

On 06/10/19 placed a Set a NO. 4 rebar capped LS 49563
DATE

SKETCH OF REFERENCE TIES



Statement of evidence for this corner location is on back of this page.

I hereby certify that this document was researched and prepared by me or under my direct supervision and that I am a licensed Land Surveyor under the laws of the State of Minnesota.

Signature *T. S. ...*

Date 6/27/19 License No. 49563

Title:

- Land Surveyor Professional Engineer
 County Surveyor County Engineer

OFFICE OF THE COUNTY RECORDER

County of Murray

I hereby certify that this document was filed in the Co.

Recorder's office at 9:00 A.M. on the 8th day of JULY A.D. 2019

County Recorder *Evelyn Larson*

by _____, Deputy

DOCUMENT NO. —

Statement of Evidence:

South Quarter corner of Section 34, Township 105 North, Range 42 West, 5th Principal Meridian, Murray County, Minnesota.

1858 - W.J. Niely, US. Deputy Surveyor, monumented south township line.

2006 - Ulteig Engineers set a 5/8" rebar capped 44563 using a found monument at the NE of 4 to control N/S; set ties and filed a Certificate of Location (no document number)

2013 - Zieske Land Surveying, surveys in Section 34 and finds a 5/8" rebar with Ulteig cap #44563 at corner location.

2017 - Zieske Land Surveying, surveys in Section 34 and finds an Ulteig cap #44563 at corner location.

2019- Westwood Professional Services did not recover the monument from the 2006 COL, but the position is tied to adjacent section corners which were located. Set a No. 4 rebar capped LS 49563 using the 2 adjacent section corner ties and confirmed location with coordinates provided. Set 3 ties.